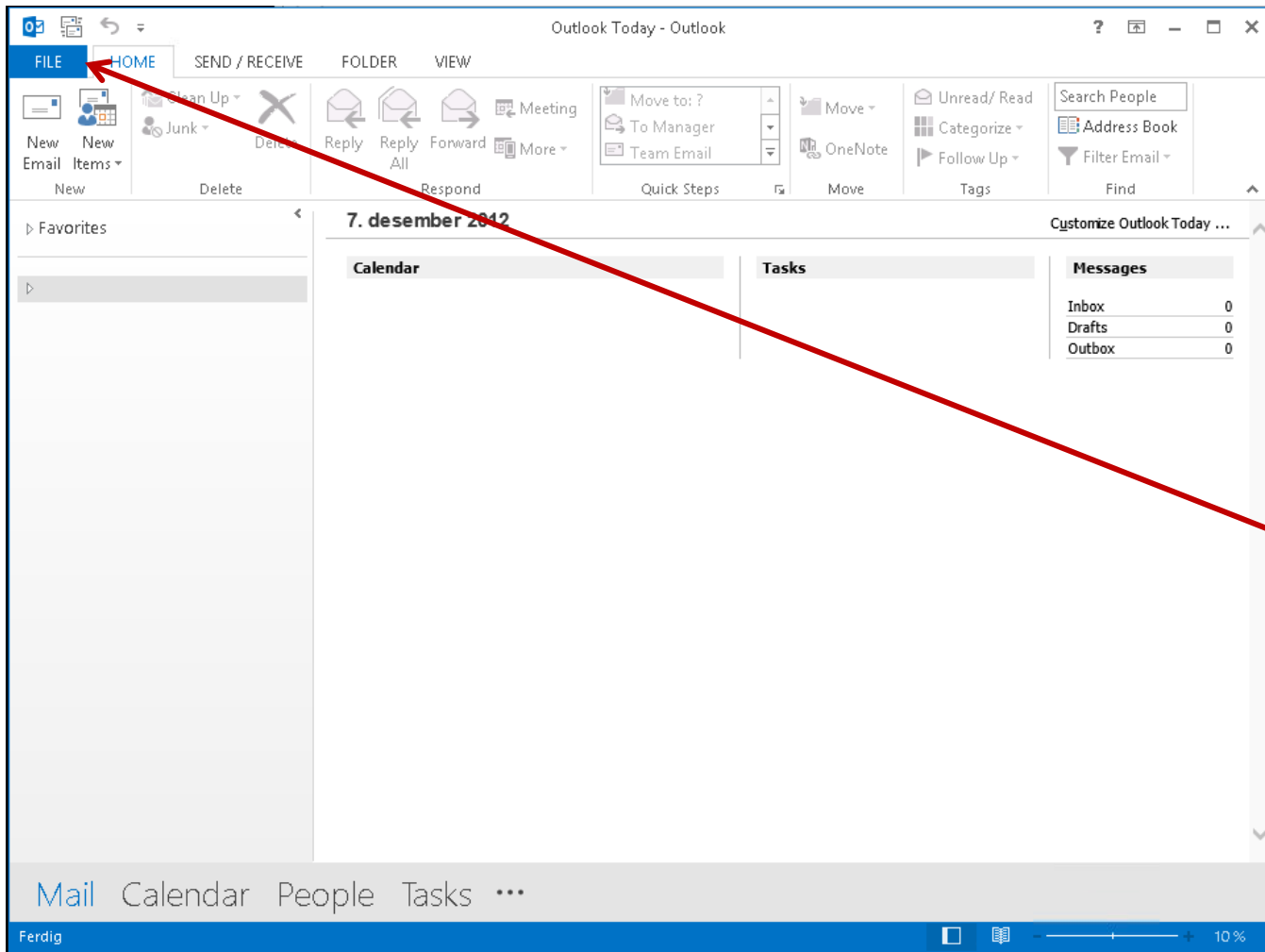
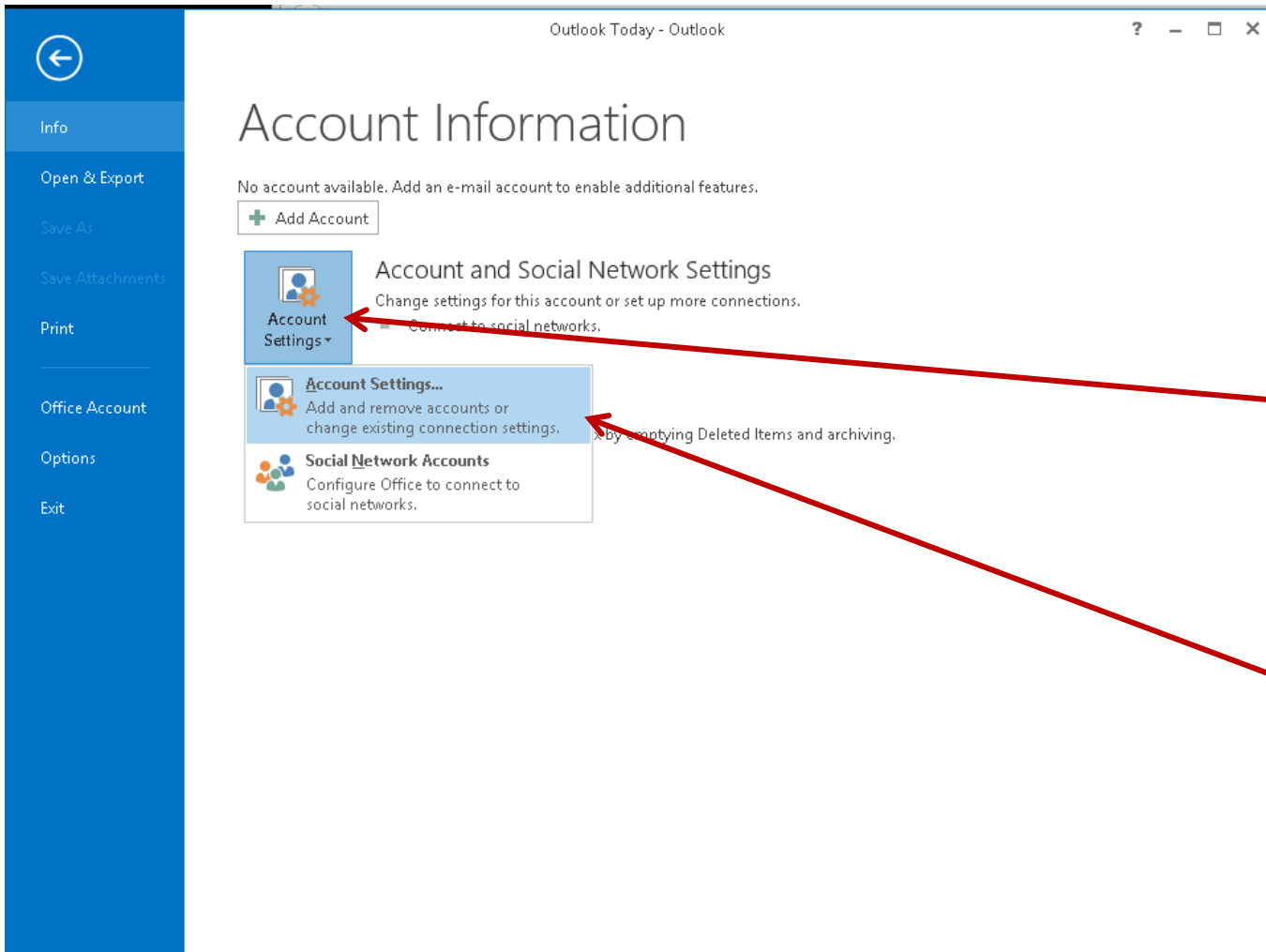


Veiviser for konfigurering av Outlook 2013

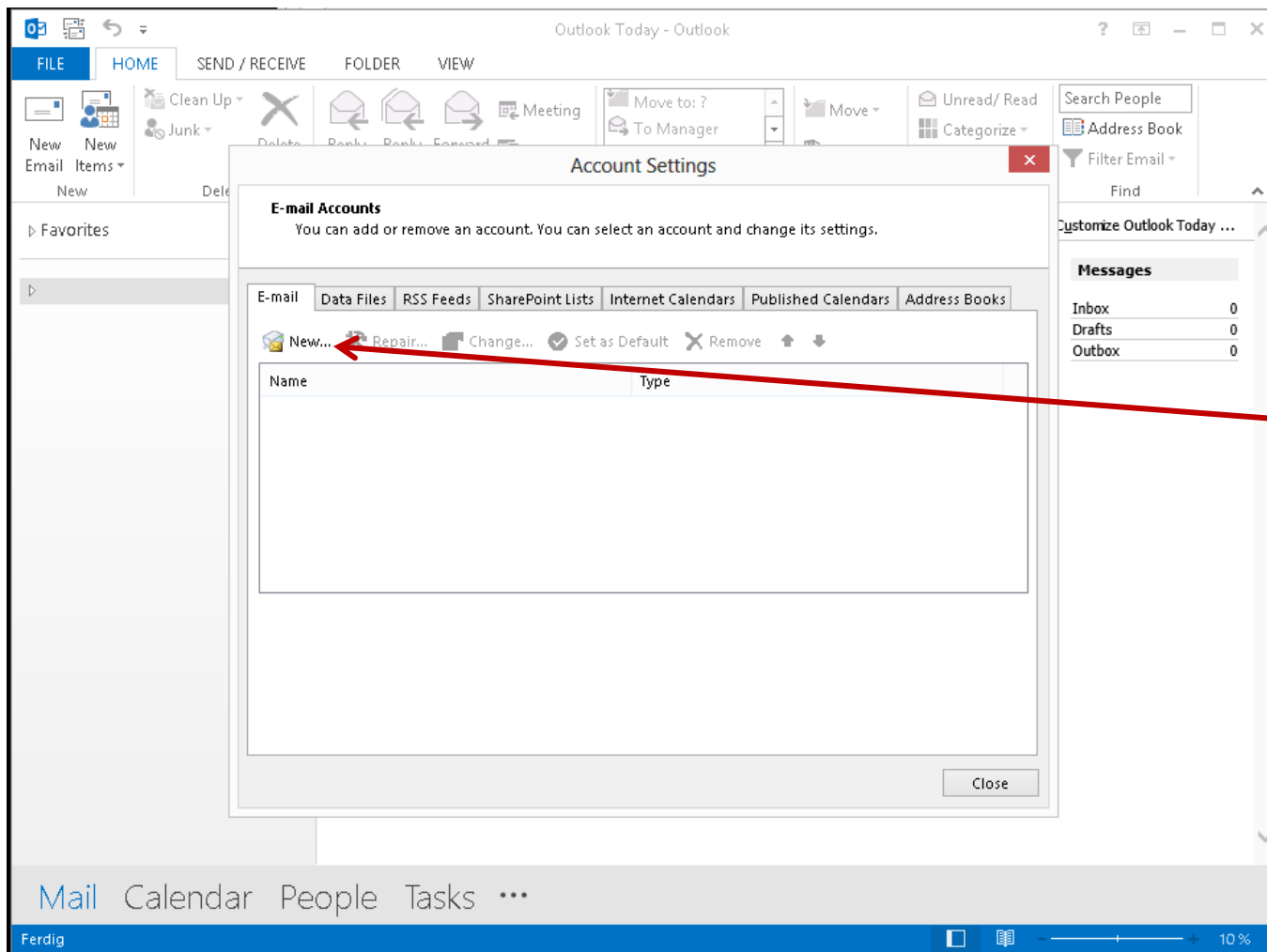


1. Gå in på file

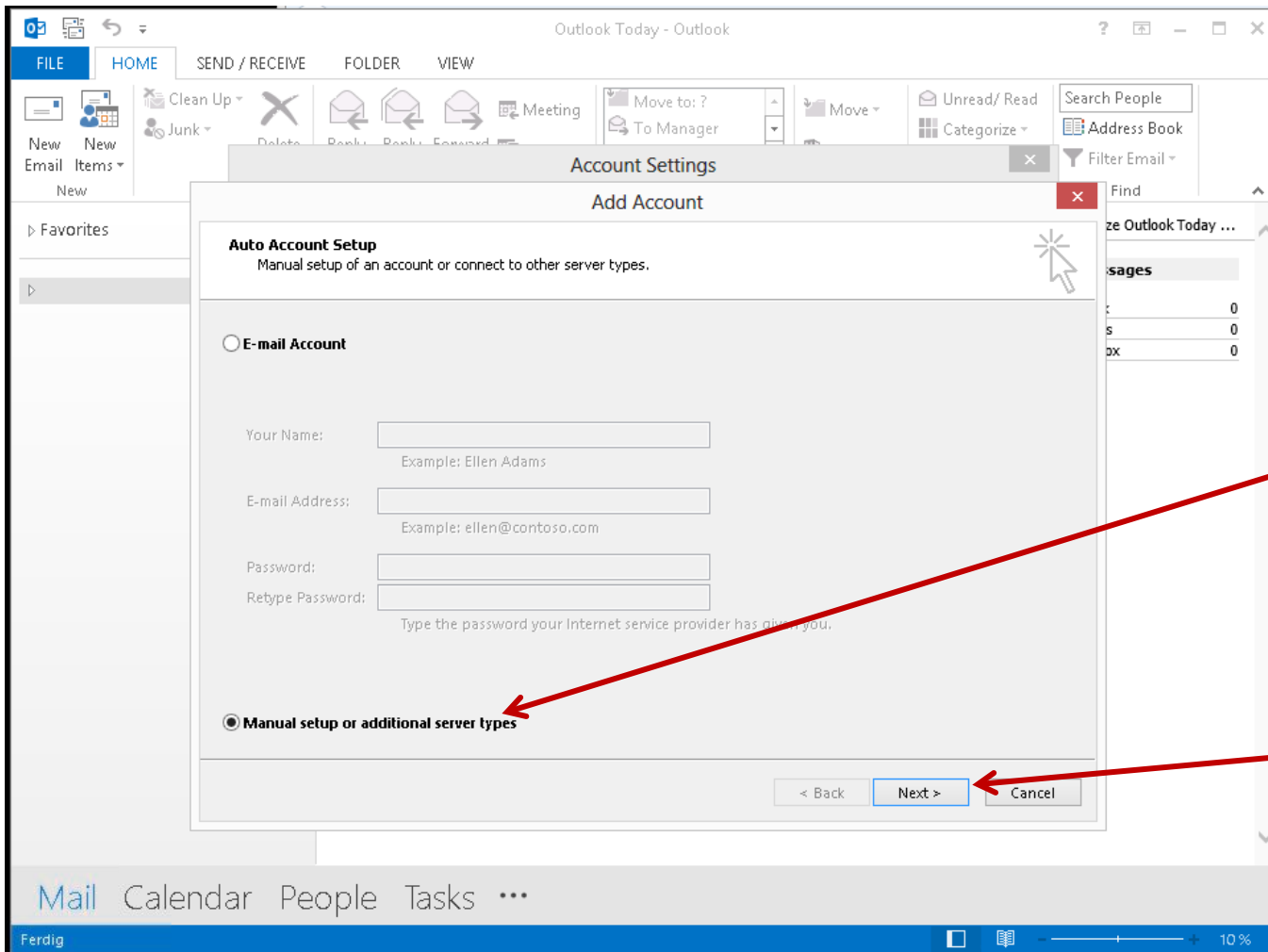


2. Tryk på
Account
settings

3. Velg Account
settings

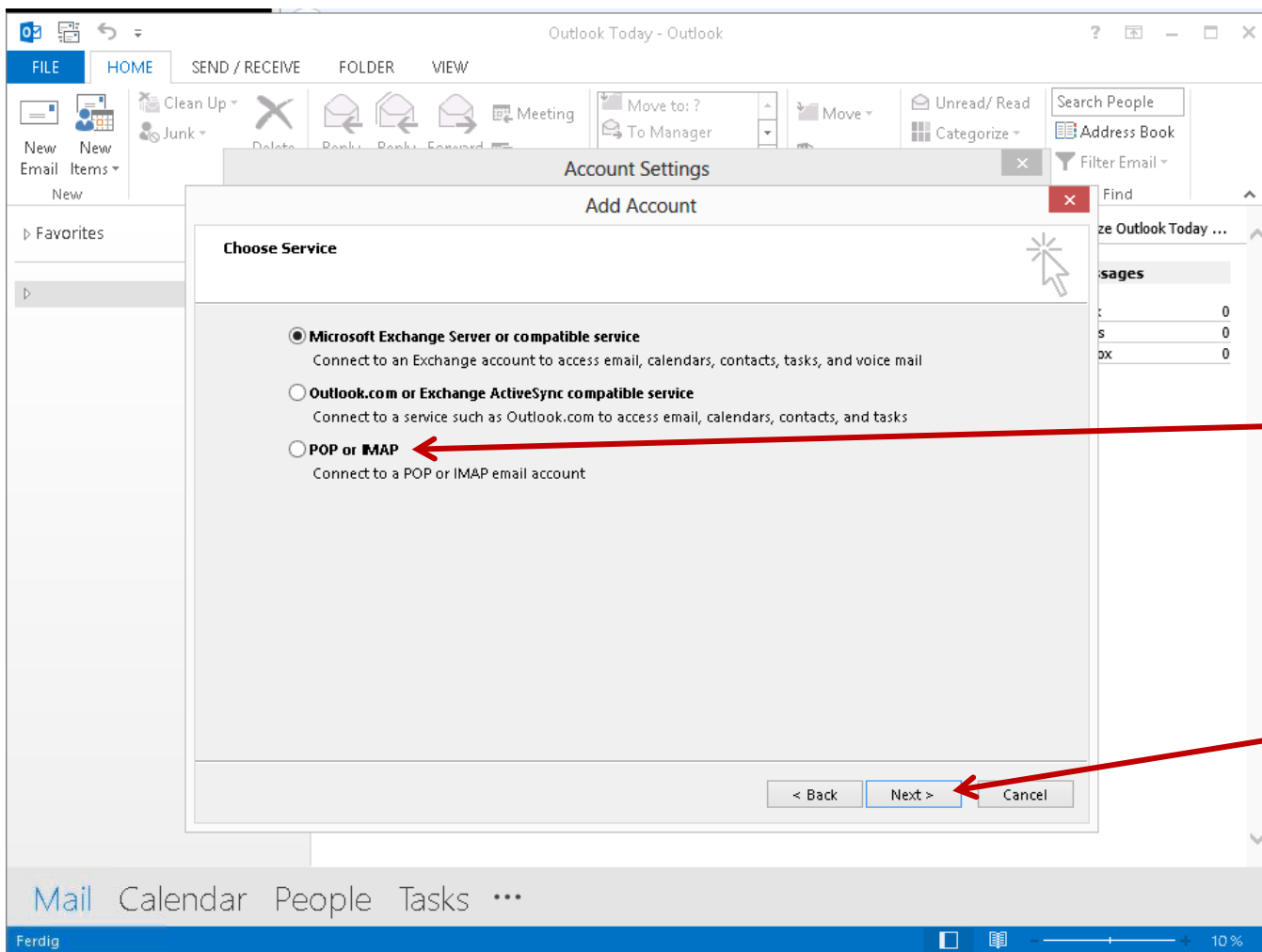


4. Trykk på New



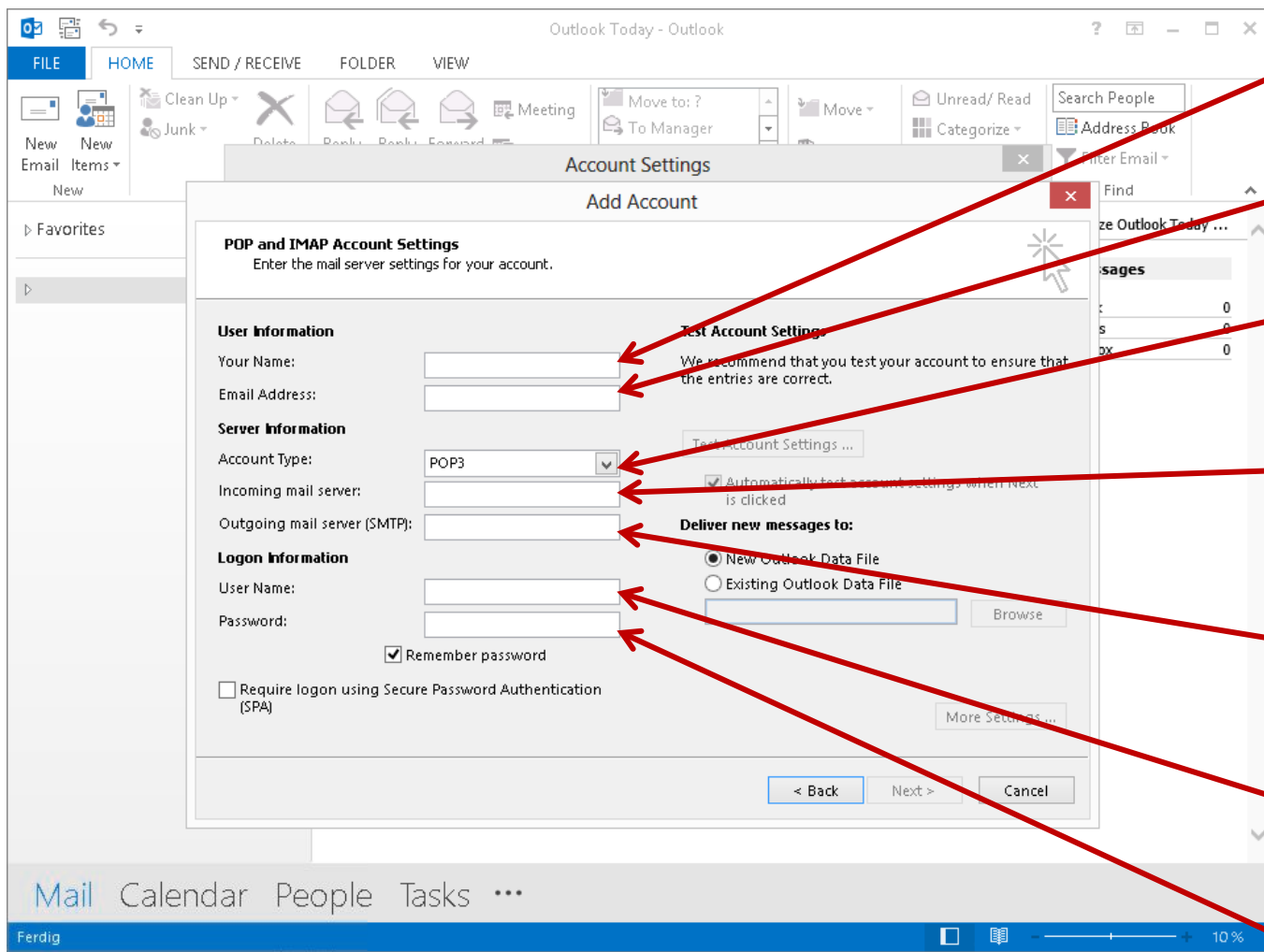
5. Velg manual setup or additional server types

6. Trykk next



7. Velg Pop or Imap

8. Trykk Next



9.Oppgi navn

10.Oppgi hele epost adressen

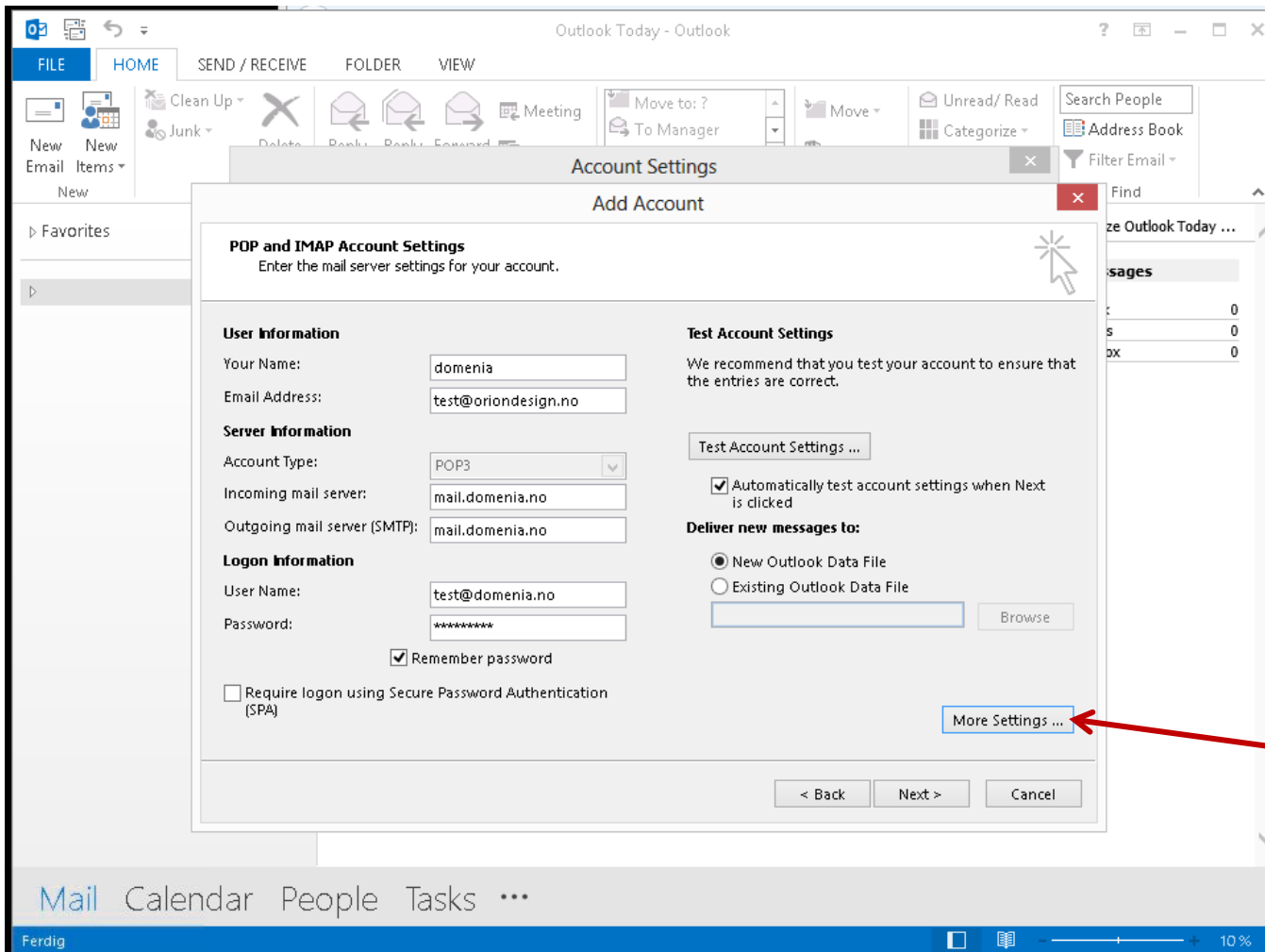
11.Velg pop3

12.Incoming mail server:
mail.domenia.no

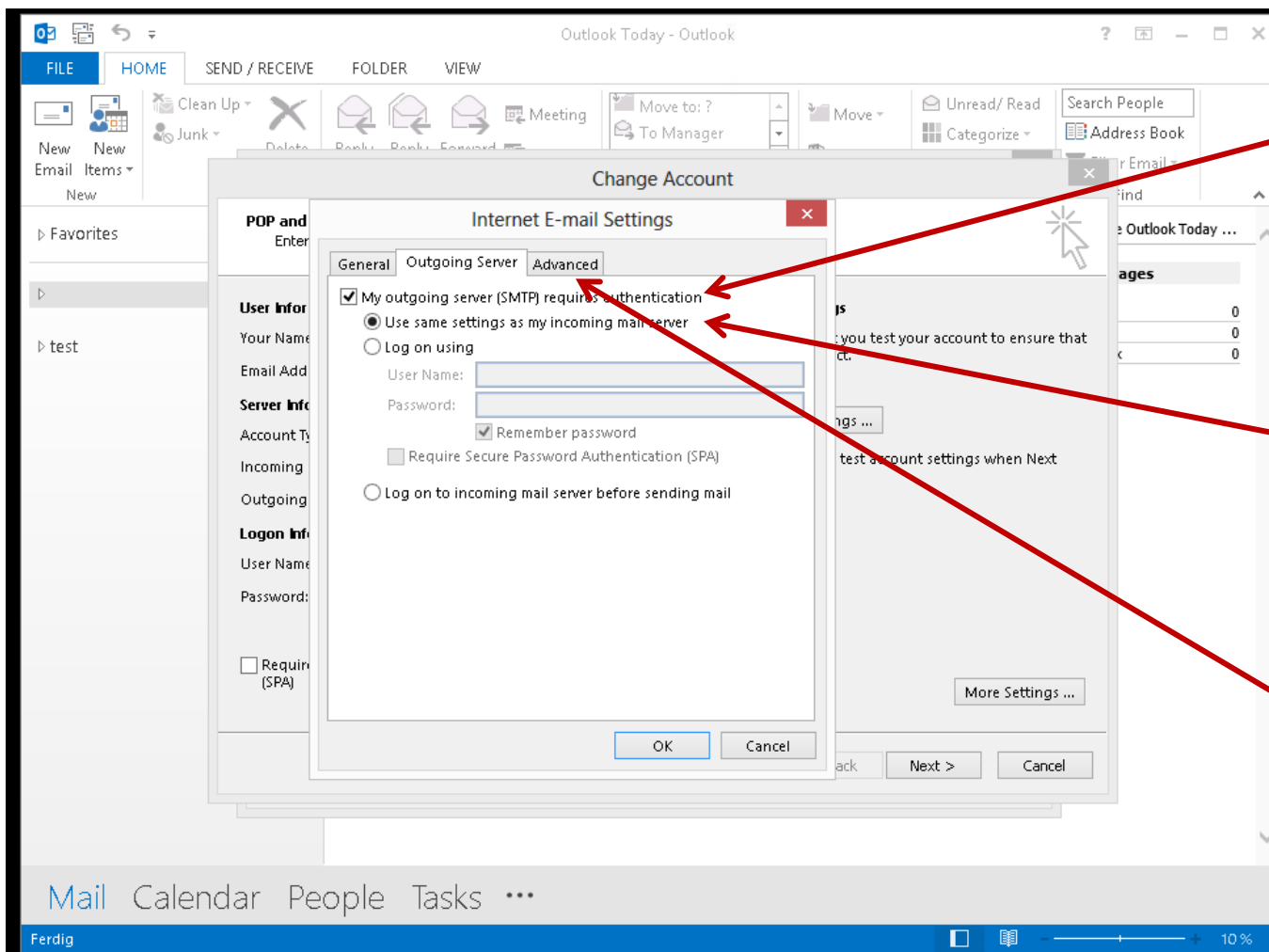
13.SMTP:
mail.domenia.no

14.Oppgi hele epost adressen

15.Oppgi passord



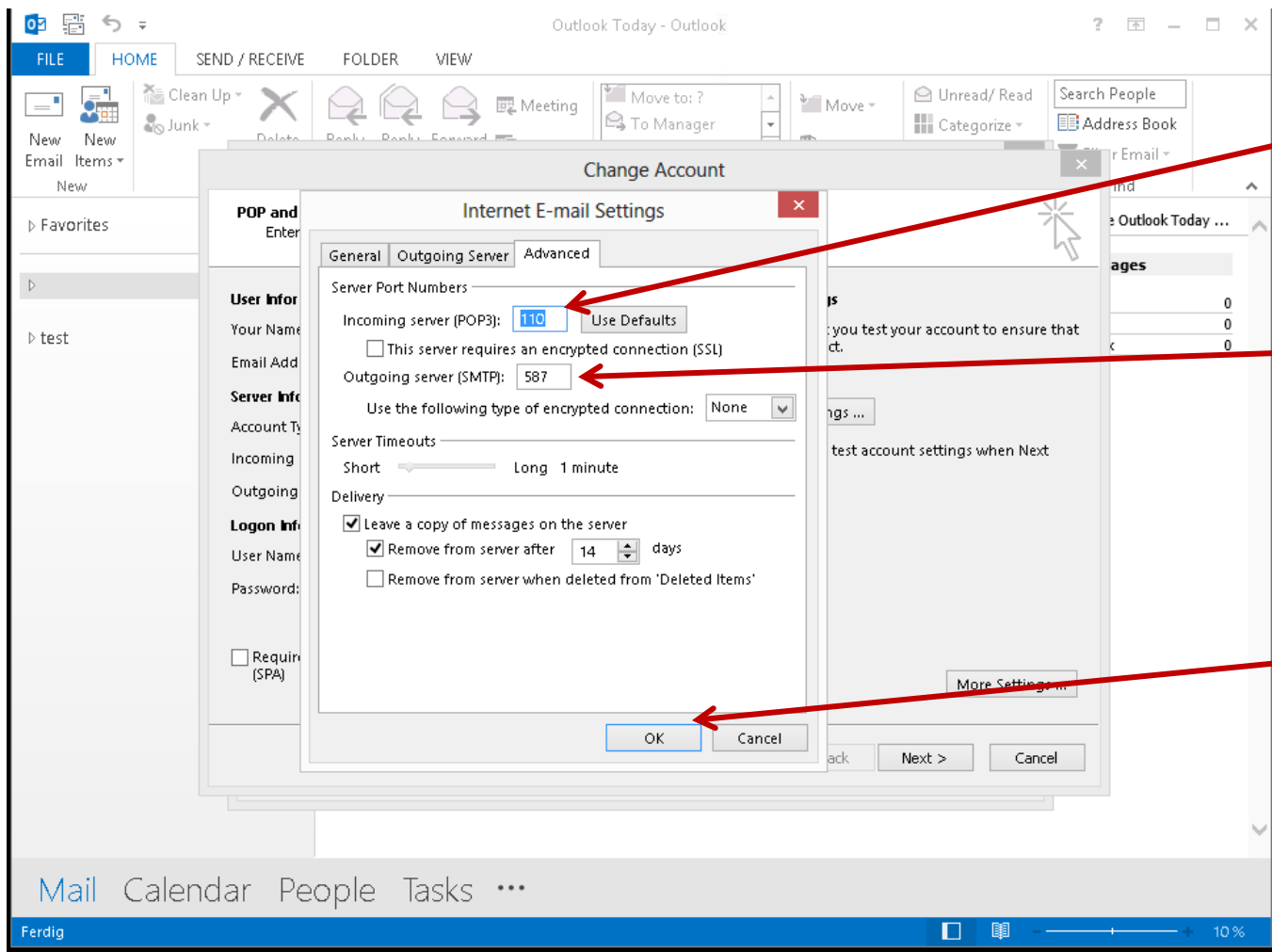
16. More settings



17.Kryss My outgoing server (SMTP) requires authentication

18.Kryss Use same settings as my incoming mail server

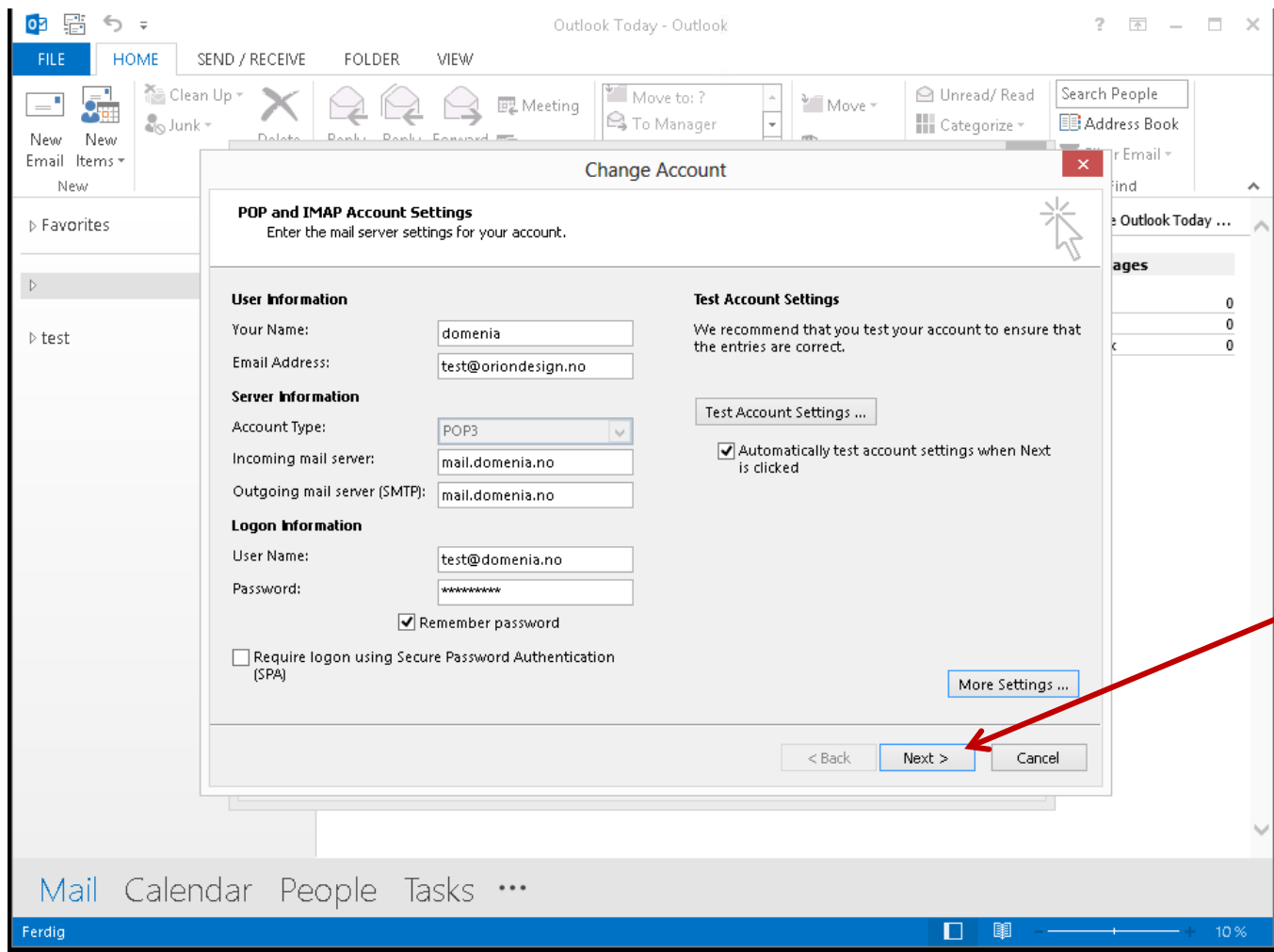
19.Trykk på Advanced



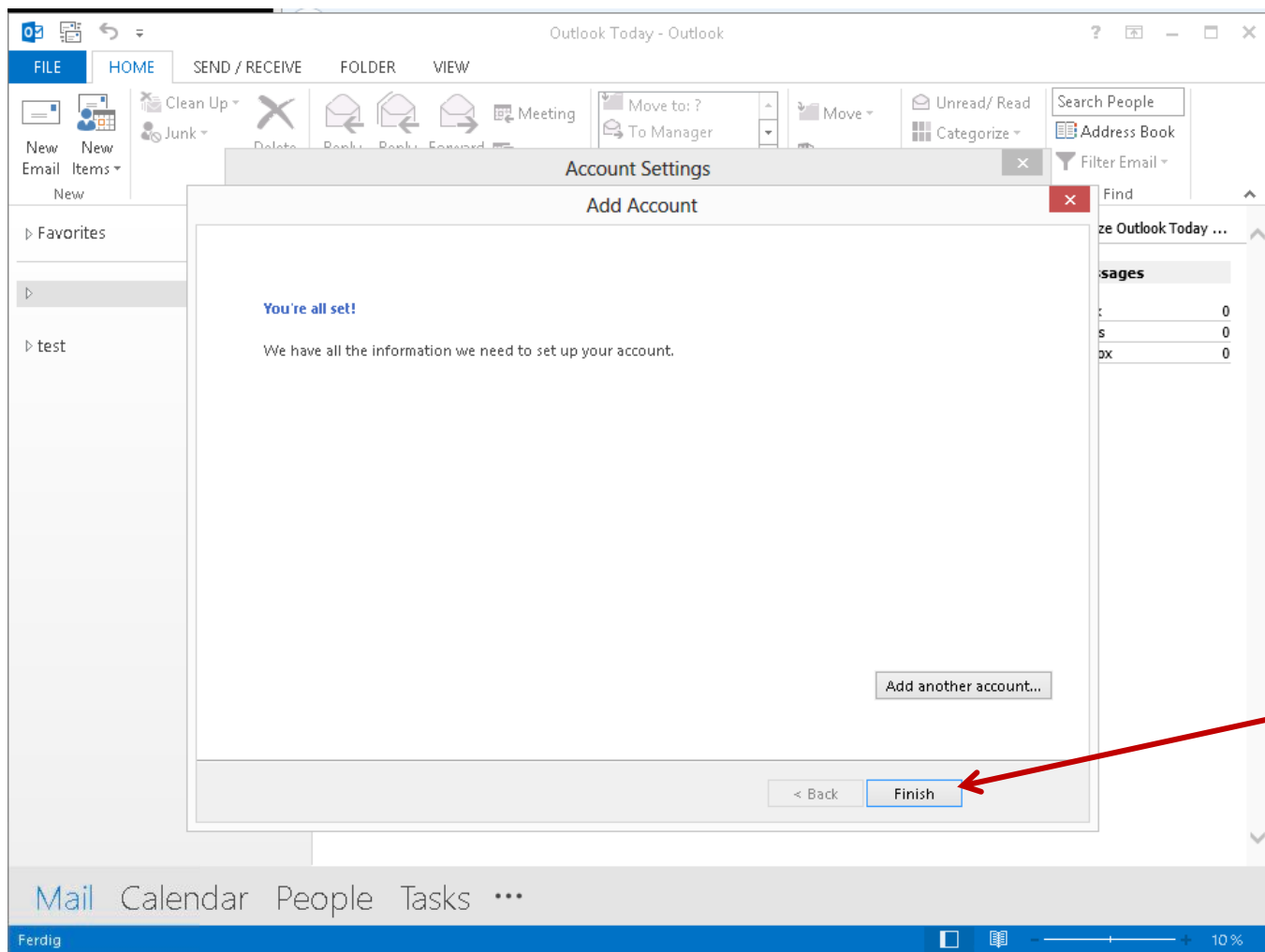
20.POP3 Oppgi
port nr 110

21.SMTP Oppgi
port nr 587

22.Trykk ok



23. Trykk på Next



24. Trykk på finish